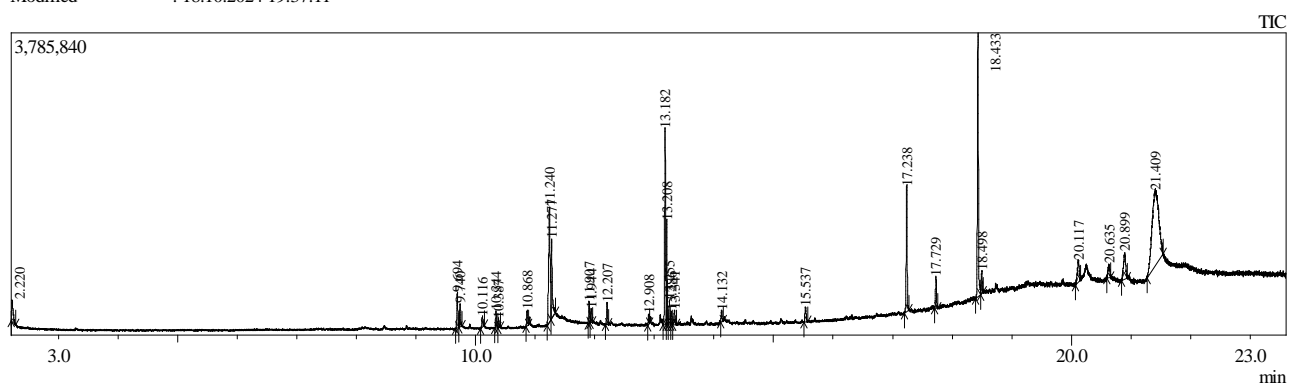


Sample Information

Analyzed by : Admin
 Analyzed : 18.10.2024 14:37:55
 Sample Type : Unknown
 Level # : 1
 Sample Name : 3758-2 Estradiol Enanthate analysis Green band
 Sample ID :
 IS Amount : [1]=1
 Sample Amount : 1
 Dilution Factor : 1
 Vial # : 27
 Injection Volume : 0.50
 Data File : C:\GCMSsolution\Data\Project1\3758-2 Estradiol Enanthate analysis Green band_29.qgd
 Org Data File : C:\GCMSsolution\Data\Project1\3758-2 Estradiol Enanthate analysis Green band_29.qgd
 Method File : C:\GCMSsolution\Data\Project1\the real screening gradient.qgm
 Org Method File : C:\GCMSsolution\Data\Project1\the real screening gradient.qgm
 Report File : C:\GCMSsolution\Data\Project1\Simple Qualitative.qgr
 Tuning File : C:\GCMSsolution\System\Tune1\HIGH CONCENTRATION TUNE.qgt
 Modified by : Admin
 Modified : 18.10.2024 19:37:11



Peak Report TIC

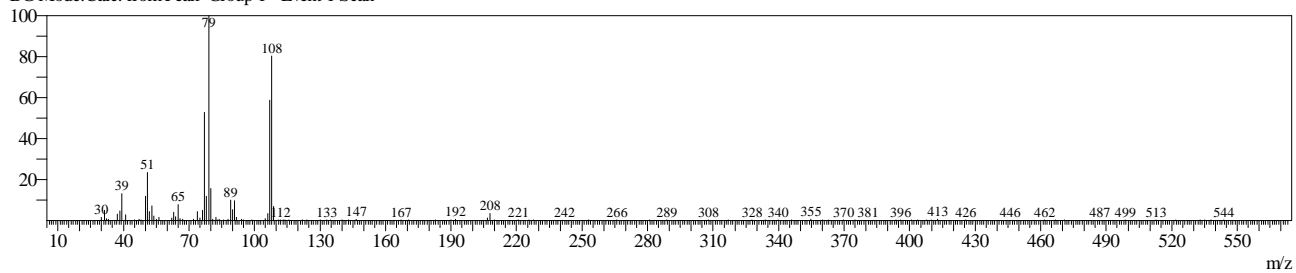
Peak#	R. Time	Area	Area%	Name
1	2.220	473976	1.71	Benzyl alcohol
2	9.694	541466	1.96	9,12-Octadecadienoyl chloride, (Z,Z)-
3	9.740	341824	1.24	(E)-13-Docosenoic acid
4	10.116	180012	0.65	n-Hexadecanoic acid
5	10.344	217187	0.79	9,17-Octadecadienal, (Z)-
6	10.387	121096	0.44	7-Hexadecenal, (Z)-
7	10.868	223508	0.81	Z-6,17-Octadecadien-1-ol acetate
8	11.240	2462402	8.90	Linoleic acid
9	11.277	1328272	4.80	Oleic Acid
10	11.907	289380	1.05	Isopropyl linoleate
11	11.944	189358	0.68	Cyclododecanemethanol
12	12.207	276616	1.00	Hexadecanoic acid, 1-(hydroxymethyl)-1,2-ethanediyl ester
13	12.908	115905	0.42	Trilinolein
14	13.182	2602628	9.41	(Z)6,(Z)9-Pentadecadien-1-ol
15	13.208	1382963	5.00	9-Octadecenal, (Z)-
16	13.255	362893	1.31	(Z)6,(Z)9-Pentadecadien-1-ol
17	13.286	181795	0.66	Glycidyl oleate
18	13.341	223603	0.81	Octadecanoic acid, 2-hydroxy-1,3-propanediyl ester
19	14.132	150006	0.54	Estrone
20	15.537	271060	0.98	Linoleic acid
21	17.238	1777503	6.43	Estra-1,3,5(10)-triene-3,17-diol (17.beta.)-, 17-propanoate
22	17.729	430136	1.56	E,E,Z-1,3,12-Nonadecatriene-5,14-diol
23	18.433	3962046	14.32	E,E,Z-1,3,12-Nonadecatriene-5,14-diol
24	18.498	343894	1.24	E,E,Z-1,3,12-Nonadecatriene-5,14-diol
25	20.117	590509	2.13	Trilinolein
26	20.635	334634	1.21	E,Z-1,3,12-Nonadecatriene
27	20.899	828108	2.99	E,Z-1,3,12-Nonadecatriene
28	21.409	7456149	26.96	Tricyclo[20.8.0.0(7.16)]triacontane, 1(22),7(16)-diepoxy-
		27658929	100.00	

Line#:1 R.Time:2.220(Scan#:25)

MassPeaks:267

RawMode:Averaged 2.219-2.221(24-26) BasePeak:79(54932)

BG Mode:Calc. from Peak Group 1 - Event 1 Scan

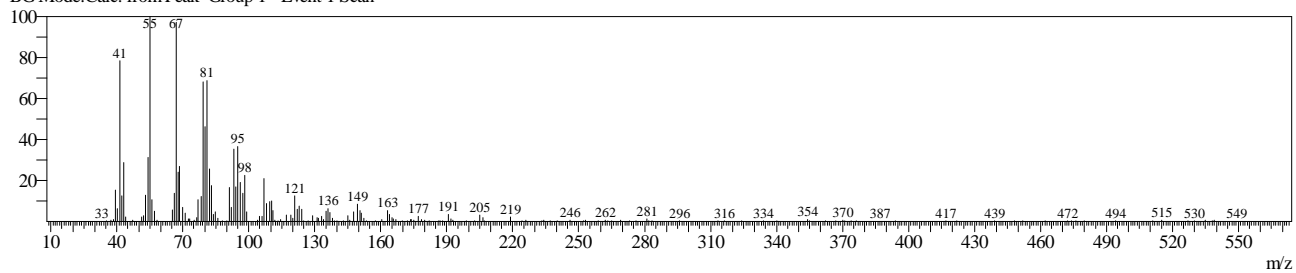


Line#:2 R.Time:9.694(Scan#:8994)

MassPeaks:285

RawMode:Averaged 9.693-9.695(8993-8995) BasePeak:55(38207)

BG Mode:Calc. from Peak Group 1 - Event 1 Scan

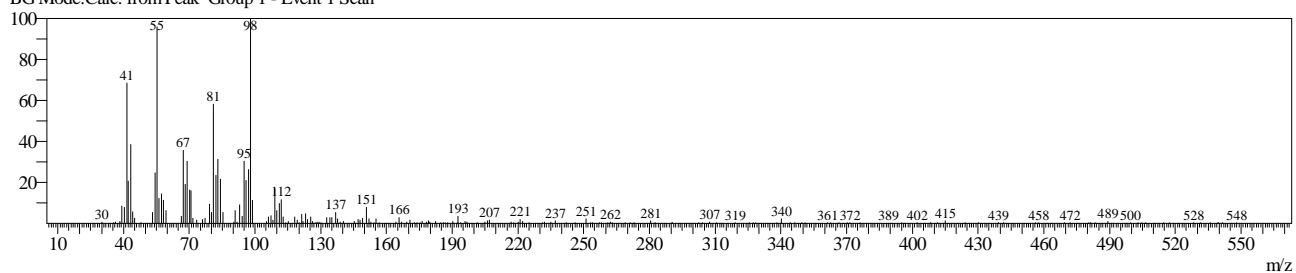


Line#:3 R.Time:9.740(Scan#:9049)

MassPeaks:306

RawMode:Averaged 9.739-9.741(9048-9050) BasePeak:98(27826)

BG Mode:Calc. from Peak Group 1 - Event 1 Scan

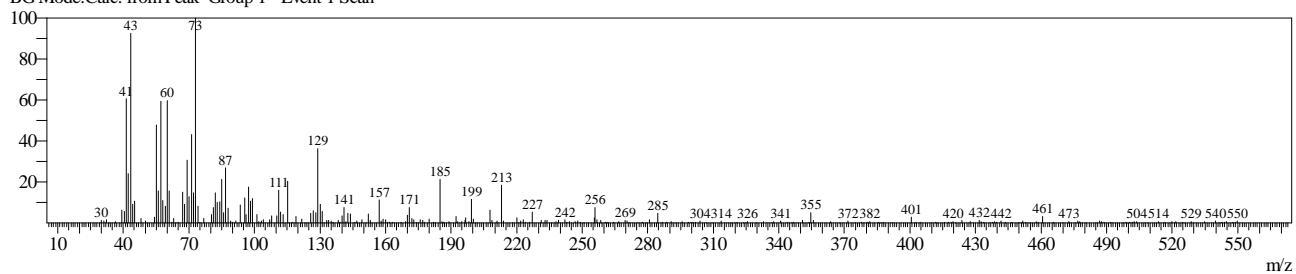


Line#:4 R.Time:10.116(Scan#:9500)

MassPeaks:292

RawMode:Averaged 10.115-10.117(9499-9501) BasePeak:73(11909)

BG Mode:Calc. from Peak Group 1 - Event 1 Scan

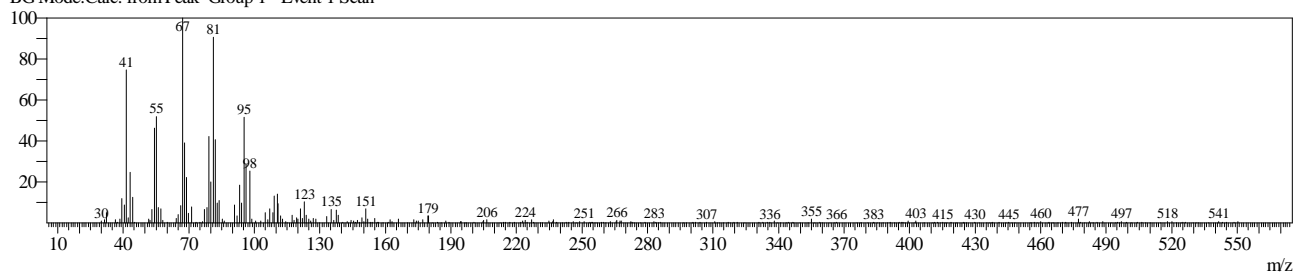


Line#:5 R.Time:10.344(Scan#:9774)

MassPeaks:296

RawMode:Averaged 10.343-10.345(9773-9775) BasePeak:67(20586)

BG Mode:Calc. from Peak Group 1 - Event 1 Scan

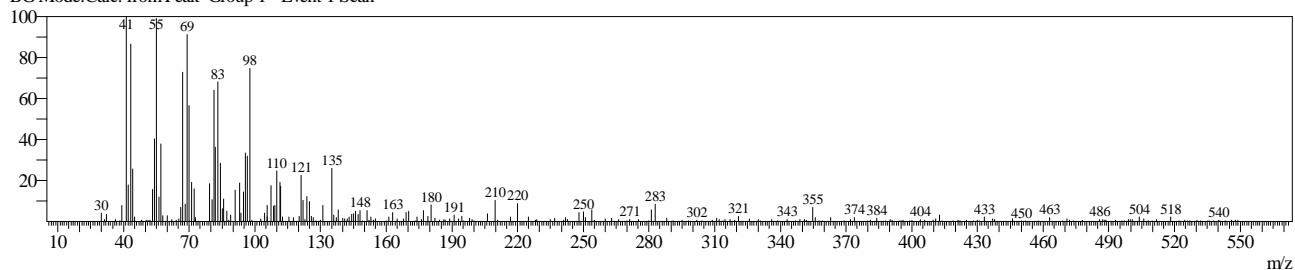


Line#:6 R.Time:10.387(Scan#:9825)

MassPeaks:284

RawMode:Averaged 10.386-10.387(9824-9826) BasePeak:41(7511)

BG Mode:Calc. from Peak Group 1 - Event 1 Scan

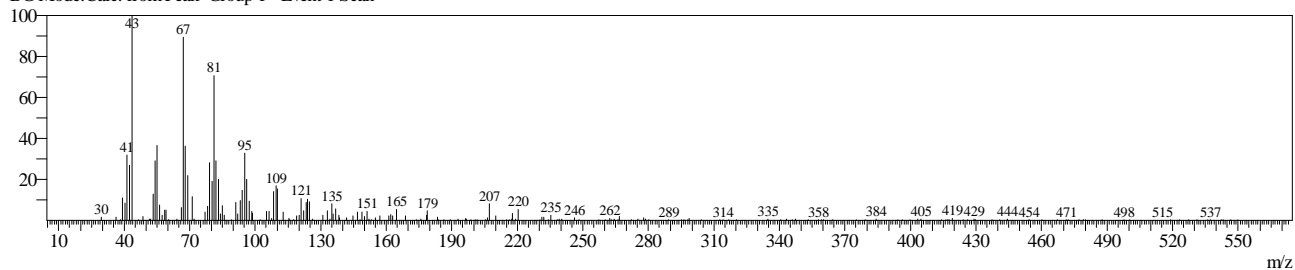


Line#:7 R.Time:10.868(Scan#:10402)

MassPeaks:306

RawMode:Averaged 10.867-10.868(10401-10403) BasePeak:43(21872)

BG Mode:Calc. from Peak Group 1 - Event 1 Scan

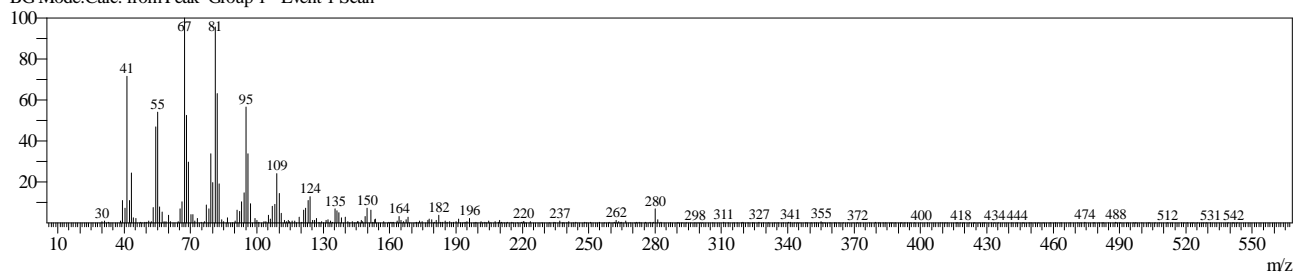


Line#:8 R.Time:11.240(Scan#:10849)

MassPeaks:339

RawMode:Averaged 11.239-11.241(10848-10850) BasePeak:67(102362)

BG Mode:Calc. from Peak Group 1 - Event 1 Scan

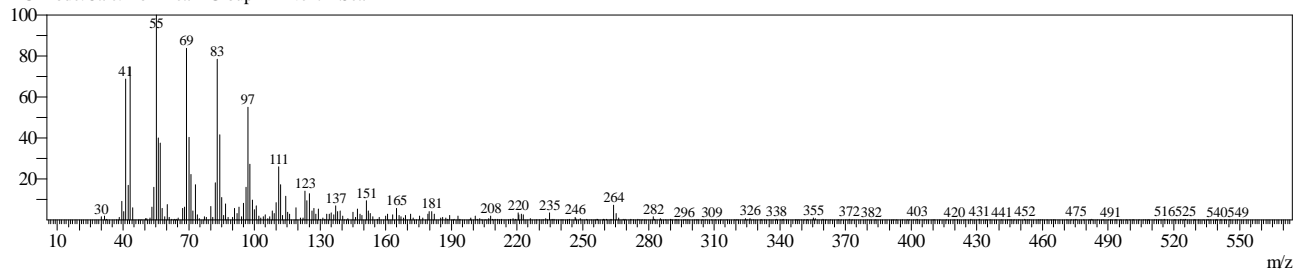


Line#:9 R.Time:11.277(Scan#:10893)

MassPeaks:341

RawMode:Averaged 11.276-11.278(10892-10894) BasePeak:55(50528)

BG Mode:Calc. from Peak Group 1 - Event 1 Scan

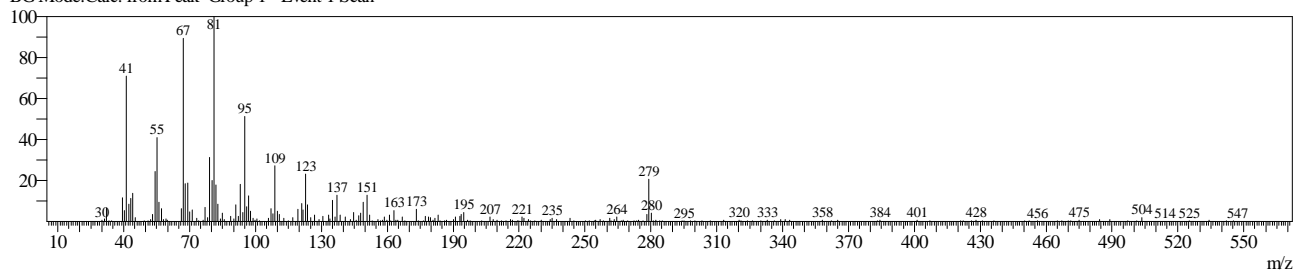


Line#:10 R.Time:11.908(Scan#:11650)

MassPeaks:301

RawMode:Averaged 11.907-11.908(11649-11651) BasePeak:81(27561)

BG Mode:Calc. from Peak Group 1 - Event 1 Scan

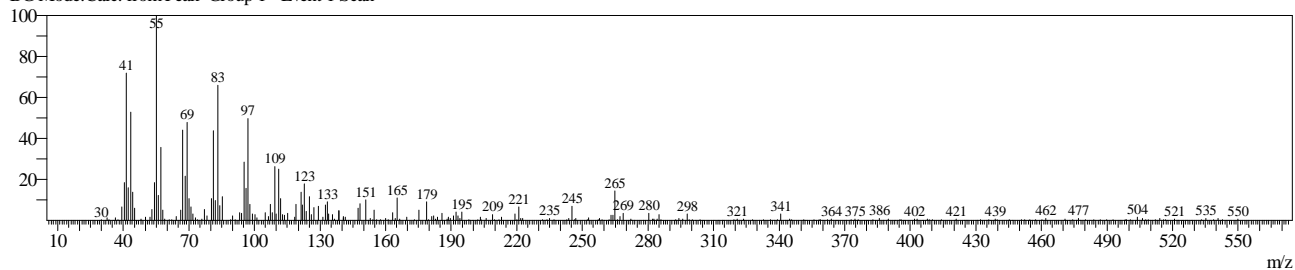


Line#:11 R.Time:11.944(Scan#:11694)

MassPeaks:303

RawMode:Averaged 11.943-11.945(11693-11695) BasePeak:55(15123)

BG Mode:Calc. from Peak Group 1 - Event 1 Scan

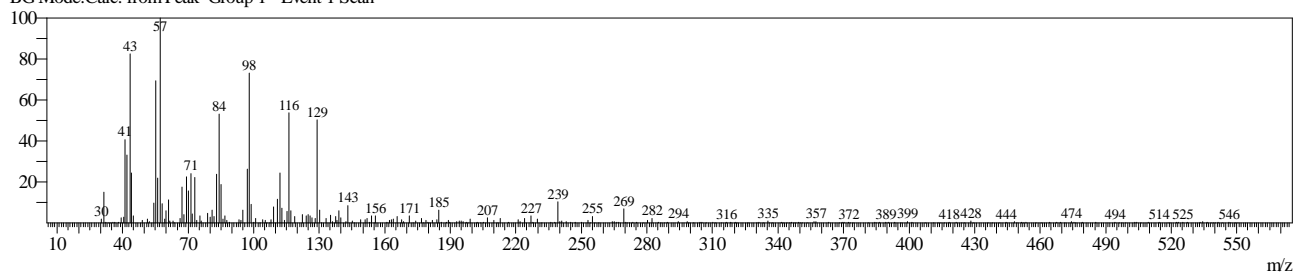


Line#:12 R.Time:12.208(Scan#:12010)

MassPeaks:285

RawMode:Averaged 12.207-12.208(12009-12011) BasePeak:57(25326)

BG Mode:Calc. from Peak Group 1 - Event 1 Scan

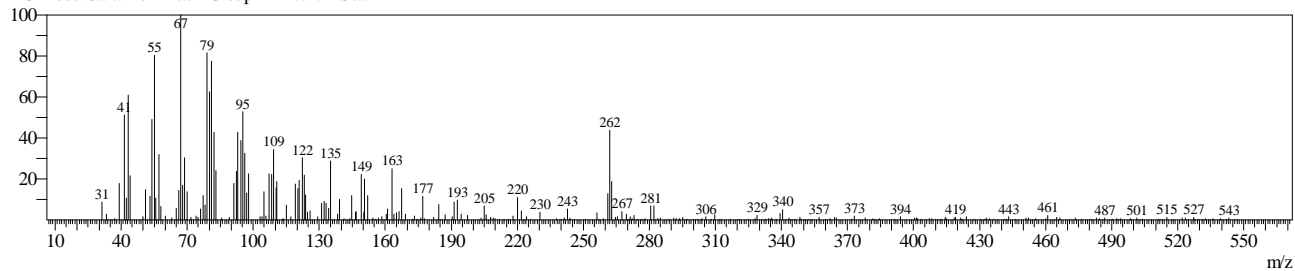


Line#:13 R.Time:12.908(Scan#:12851)

MassPeaks:294

RawMode:Averaged 12.908-12.909(12850-12852) BasePeak:67(7456)

BG Mode:Calc. from Peak Group 1 - Event 1 Scan

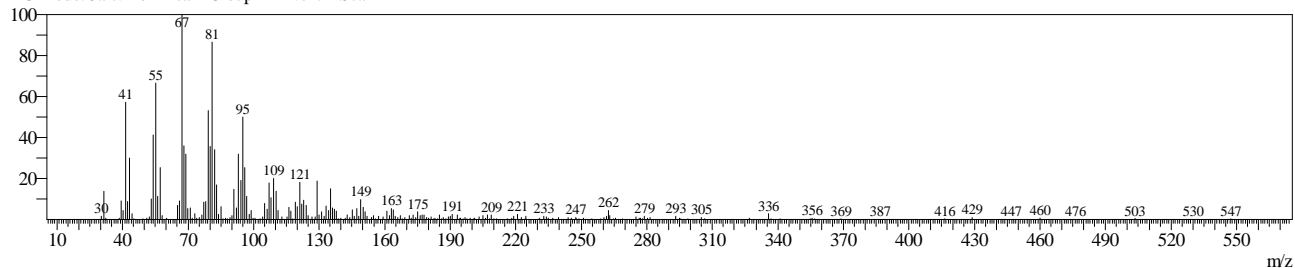


Line#:14 R.Time:13.182(Scan#:13179)

MassPeaks:362

RawMode:Averaged 13.181-13.182(13178-13180) BasePeak:67(159857)

BG Mode:Calc. from Peak Group 1 - Event 1 Scan

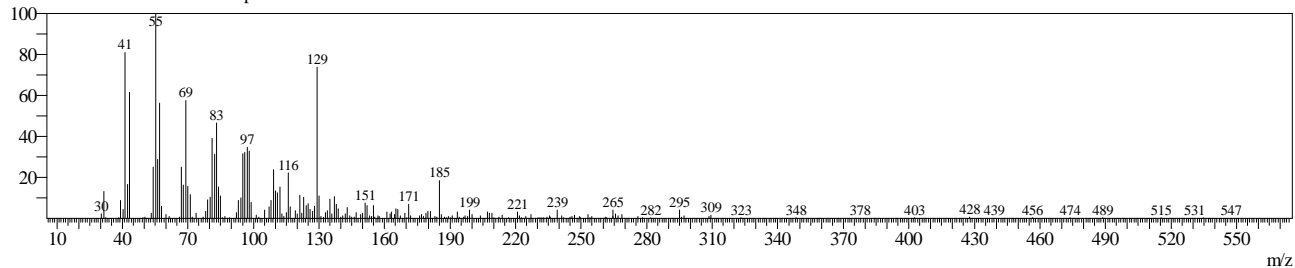


Line#:15 R.Time:13.208(Scan#:13211)

MassPeaks:316

RawMode:Averaged 13.208-13.209(13210-13212) BasePeak:55(67418)

BG Mode:Calc. from Peak Group 1 - Event 1 Scan

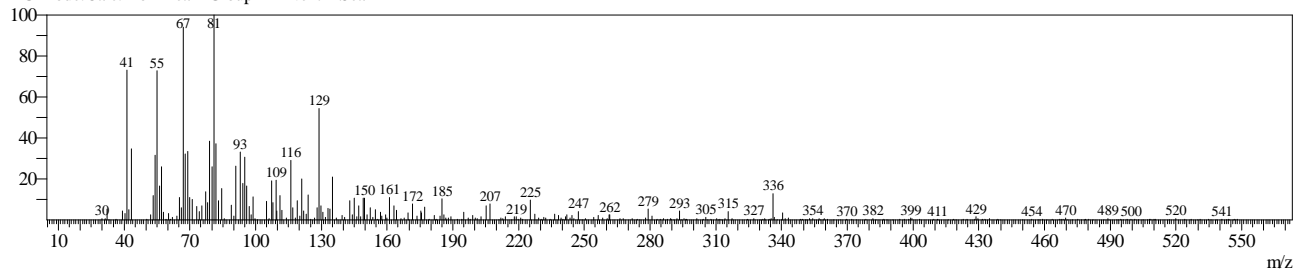


Line#:16 R.Time:13.255(Scan#:13267)

MassPeaks:314

RawMode:Averaged 13.254-13.256(13266-13268) BasePeak:81(17230)

BG Mode:Calc. from Peak Group 1 - Event 1 Scan

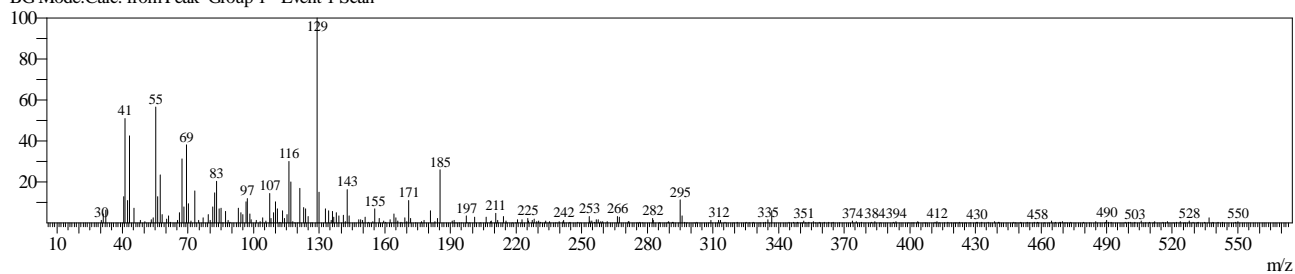


Line#:17 R.Time:13.286(Scan#:13304)

MassPeaks:300

RawMode:Averaged 13.285-13.287(13303-13305) BasePeak:129(13196)

BG Mode:Calc. from Peak Group 1 - Event 1 Scan

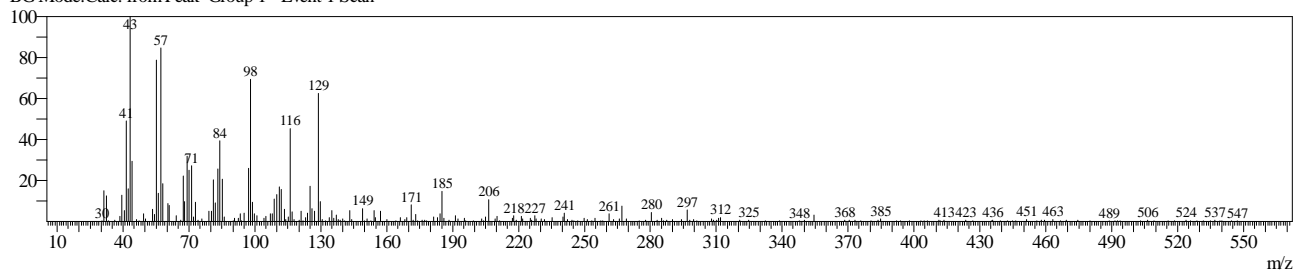


Line#:18 R.Time:13.341(Scan#:13370)

MassPeaks:296

RawMode:Averaged 13.340-13.342(13369-13371) BasePeak:43(14154)

BG Mode:Calc. from Peak Group 1 - Event 1 Scan

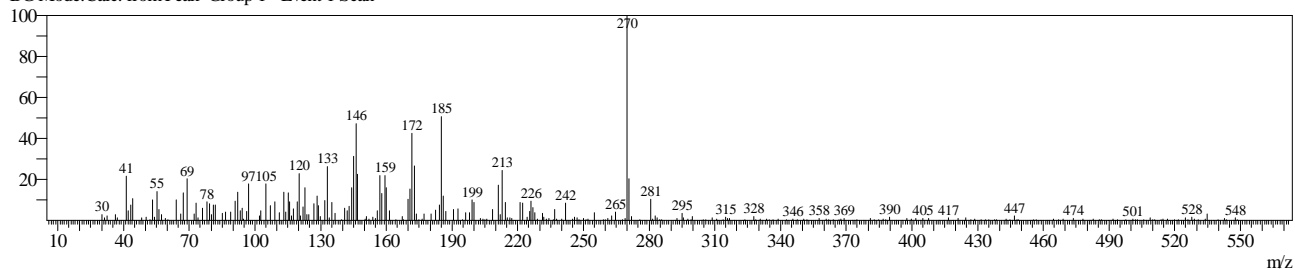


Line#:19 R.Time:14.132(Scan#:14319)

MassPeaks:314

RawMode:Averaged 14.131-14.133(14318-14320) BasePeak:270(12120)

BG Mode:Calc. from Peak Group 1 - Event 1 Scan

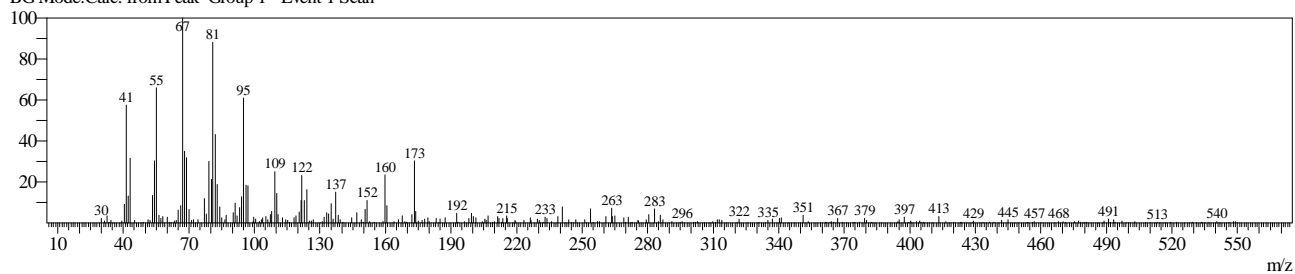


Line#:20 R.Time:15.537(Scan#:16005)

MassPeaks:321

RawMode:Averaged 15.536-15.538(16004-16006) BasePeak:67(15671)

BG Mode:Calc. from Peak Group 1 - Event 1 Scan

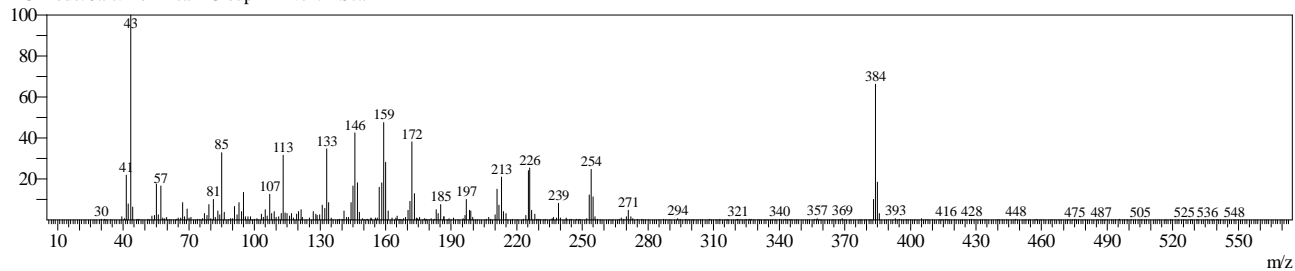


Line#:21 R.Time:17.238(Scan#:18046)

MassPeaks:351

RawMode:Averaged 17.237-17.238(18045-18047) BasePeak:43(141528)

BG Mode:Calc. from Peak Group 1 - Event 1 Scan

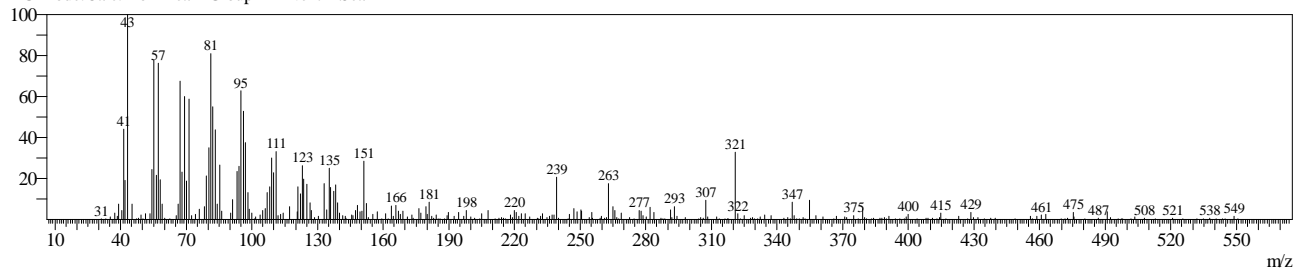


Line#:22 R.Time:17.729(Scan#:18636)

MassPeaks:335

RawMode:Averaged 17.728-17.730(18635-18637) BasePeak:43(20434)

BG Mode:Calc. from Peak Group 1 - Event 1 Scan

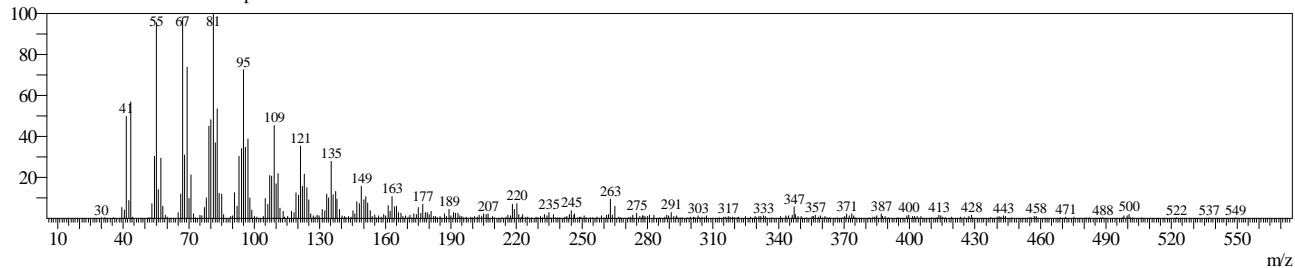


Line#:23 R.Time:18.433(Scan#:19481)

MassPeaks:417

RawMode:Averaged 18.433-18.434(19480-19482) BasePeak:81(170924)

BG Mode:Calc. from Peak Group 1 - Event 1 Scan

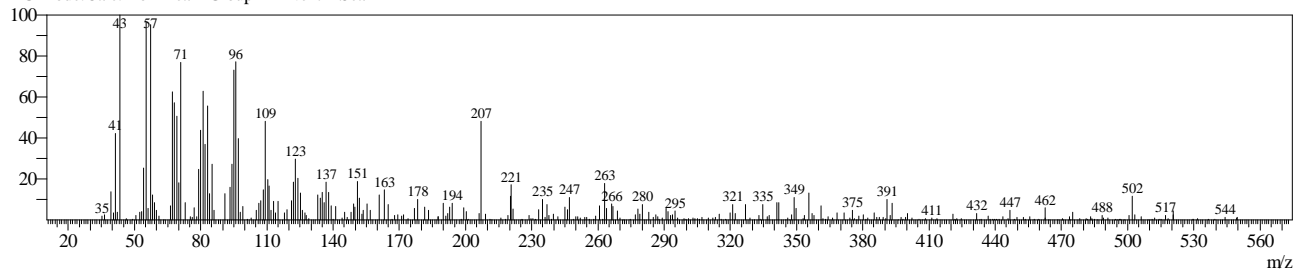


Line#:24 R.Time:18.498(Scan#:19559)

MassPeaks:321

RawMode:Averaged 18.497-18.499(19558-19560) BasePeak:43(13181)

BG Mode:Calc. from Peak Group 1 - Event 1 Scan

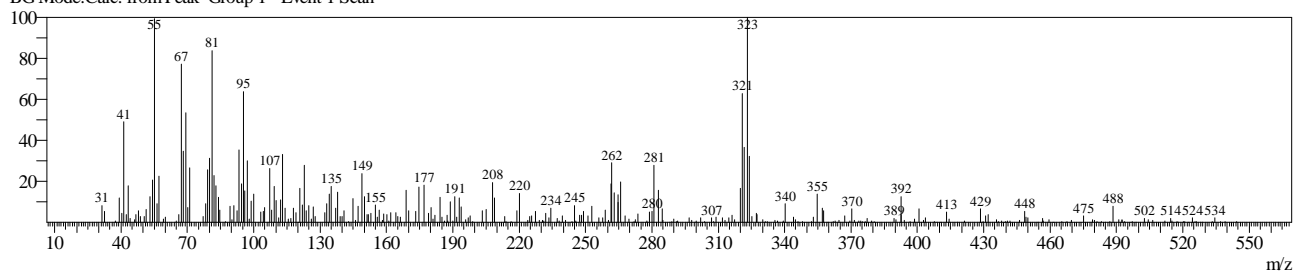


Line#:25 R.Time:20.118(Scan#:21502)

MassPeaks:315

RawMode:Averaged 20.117-20.118(21501-21503) BasePeak:323(13955)

BG Mode:Calc. from Peak Group 1 - Event 1 Scan

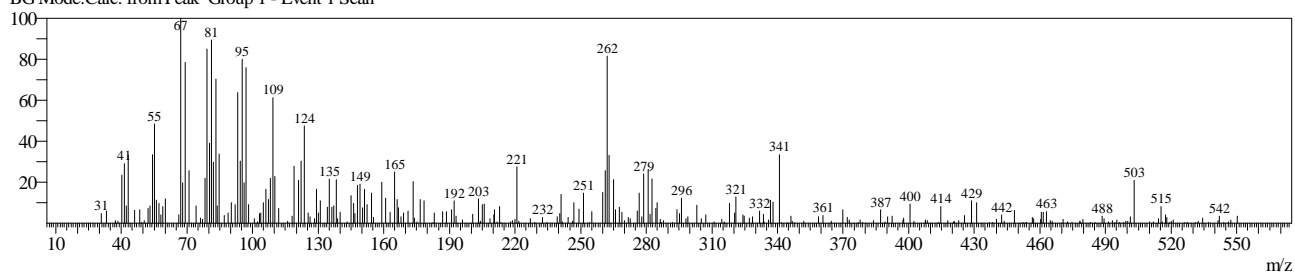


Line#:26 R.Time:20.635(Scan#:22123)

MassPeaks:296

RawMode:Averaged 20.634-20.636(22122-22124) BasePeak:67(8189)

BG Mode:Calc. from Peak Group 1 - Event 1 Scan

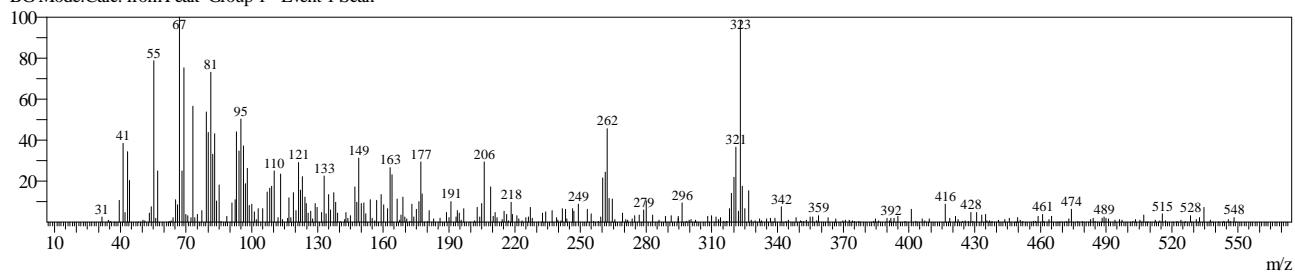


Line#:27 R.Time:20.898(Scan#:22439)

MassPeaks:336

RawMode:Averaged 20.898-20.899(22438-22440) BasePeak:67(14904)

BG Mode:Calc. from Peak Group 1 - Event 1 Scan



Line#:28 R.Time:21.409(Scan#:23052)

MassPeaks:385

RawMode:Averaged 21.408-21.410(23051-23053) BasePeak:55(81039)

BG Mode:Calc. from Peak Group 1 - Event 1 Scan

